

NEWCASTLE-UNDER-LYME BOROUGH COUNCIL
CORPORATE LEADERSHIP TEAMS' REPORT TO CABINET

23rd June 2026

Report Title: Newcastle Community Safety Partnership – Partnership Priorities Update

Submitted by: Service Director – Neighbourhood Delivery

Portfolios: Residents Services and Neighbourhoods

Ward(s) affected: All

| <u>Purpose of the Report</u> | <u>Key Decision</u> Yes x No |
|---|-------------------------------------|
| <p>To provide Cabinet with an update on the performance of the Community Safety Partnership for 2025-2026 in line with the Local Police and Crime Plan and to update on the Community Safety Strategic Assessment priorities and the Newcastle Community Safety Action plan for 2026-2027.</p> <p>To also update members on the Night Time Economy Strategy project and to authorise the Service Director – Neighbourhood Delivery to accept project funding for the delivery of this project, should the application for Pilot Town status be successful.</p> | |
| <p><u>Recommendation</u></p> <p>That Cabinet:</p> <ol style="list-style-type: none"> 1.Receives the report and notes the outcomes for 2025-2026 and the work of the Community Safety Partnership in continuing to tackle crime and anti-social behaviour, as well as the work in progress to continue to tackle identified priority issues. 2. Authorises the Service Director - Neighbourhood Delivery to formally accept project funding for the Night Time Economy Pilot Town status, in consultation with the Portfolio Holder for Residents Services and Neighbourhoods, if the bid is successful, and to implement the project. | |
| <p><u>Reasons</u></p> <p>To provide an update to Cabinet on the work of the Newcastle Community Safety Partnership for 2025-2026 and to outline the action plan for 2026-2027.</p> | |

1. **Background**

- 1.1 The Council, Staffordshire Police, and other agencies work collaboratively under the umbrella of the Newcastle Community Safety Partnership to identify and address community safety issues across the Borough. This is a statutory duty under Section 17 of the Crime and Disorder Act 1998 (as amended by the Police and Justice Act 2006).
- 1.2 Like all other areas across the UK, Newcastle-under-Lyme experiences some issues relating to crime and anti-social behaviour which can have a negative impact on community perceptions of the Borough. To address this, a number of initiatives are in progress which are being jointly planned and delivered by the Council, the Police and other Community Safety Partnership agencies. These plans form part of the Local Police and Crime Plan (see Appendix 1)
- 1.3 This report focuses on the performance of the Community Safety Partnership in dealing with the strategic priorities for 2025-2026 and also identifies the priorities for 2026-2027.

2. **Issues**

- 2.1 The Community Safety Strategic Assessment for Newcastle is commissioned on behalf of the Police, Fire and Crime Commissioner to provide Community Safety Partnerships (CSPs) with a data led assessment on the issues within the Borough. The CSP then formulate an action plan which outlines their response to how they will tackle the priorities identified.
- 2.2 The Strategic Assessment recently underwent a full 3 year refresh and was published in March 2026. The headline findings for Newcastle-under-Lyme were very positive:
 - Overall crime down 20.4% since 2022/23
 - Crime rate lower than regional and national averages
 - Violence remains largest offence category
 - Town centre remains primary hotspot
 - Complex vulnerability is driving demand rather than volume crime (eg domestic abuse, violence against women and girls, substance misuse/County Lines, cost of living)

In summary, levels of crime in Newcastle-under-Lyme are lower than the rate for Staffordshire Police force area as a whole and are also lower than the rates for the West Midlands.

- 2.3 Looking back over the last year, the identified priorities for 2025/2026 were:
 - Anti-social behaviour
 - Theft Offences and Business Crime
 - Violence
 - Drugs

- Domestic Abuse
- Stalking and Harassment

2.4 The following information provided by Staffordshire Police as at April 2026, illustrates data for Newcastle-under-Lyme.

Anti-social Behaviour

Figure 1 shows the number of reported ASB occurrences in Staffordshire for the period of 2025-2026. The table shows that during 2025-2026 there were a total of 2,235 ASB incidents in comparison to 1,842 for the previous 12 month period. This is a 21% increase in incidents.

Repeat locations during 2025-2026 in Newcastle have included:

- Wolstanton Retail Park – 21 incidents over a 12 month period relating to car cruising related activity.
- McDonalds, High Street – 19 incident reported relating to homeless and youth related issues.
- Morrison’s Goose Street – 18 incidents reported relating to homeless and youth related issues.
- The Wammy – 16 incidents reported relating to off road bikes.
- Morrisons, Lower Milehouse Lane – 16 incidents related to youth related ASB.


| 14,292 ASB Occurrences | 2,235 Current Complete 12 Months | 1,842 Previous Complete 12 Months | 21.34% 393 |  Back to Start |
|---|-------------------------------------|--------------------------------------|---------------|---|
| <small>Volumes depend on END date - please ensure you have the correct dates entered.</small> | | | | |
| Occurrence Type | Current Complete 12 Months | Previous Complete 12 Months | Difference | % Difference |
| ASB - Community Nuisance - E2 | 1,675 | 1,391 | 284 | 20.42% |
| ASB - Environmental - E3 | 31 | 26 | 5 | 19.23% |
| ASB - Personal Nuisance - E1 | 529 | 425 | 104 | 24.47% |
| Total | 2,235 | 1,842 | 393 | 21.34% |
| LPT | Current Complete 12 Months | Previous Complete 12 Months | Difference | % Difference |
| Newcastle | 2,235 | 1,842 | 393 | 21.34% |
| Total | 2,235 | 1,842 | 393 | 21.34% |

Figure 1– Staffordshire Police ASB performance figures 2025/2026

Theft Offences and Business Crime

Figure 2 shows that the incidents in relation to theft and business crime have reduced by 5% from the previous 12 months with a total of 780 incidents reported for 2025-2026.



Figure 2 – Staffordshire Police Theft Offence and Business Crime performance figures 2025/2026.

Repeat locations for this crime type included:

- Sainsbury’s, Liverpool Road – 65 incidents
- Grove House, London Road – 59 incidents
- Morrison’s, Goose Street – 59 incidents
- ASDA, Wolstanton – 53 incidents
- Morrison’s, Lower Milehouse Lane – 40 incidents.

A number of stores where repeat offences were being recorded were adopted onto the Problem Solving case work where partners worked to reduce incidents and help to identify offenders.

Further to this it worth noting that there is a 25% detection rate in theft offences in general and a 69.4% detection rate for shoplifting. This has attributed to prosecutions and the increase in the issuing of Criminal Behaviour Orders (CBO’s).

Violence

There has been an increase in violence related offences by 6% during 2025-2026 with a total of 2,147 incidents recorded. This includes violence with injury and violence without injury related offences. It is noted that a number of these offences spike during peak times that form part of the night time economy.

Crimes by HO Offence Group L2 > L5

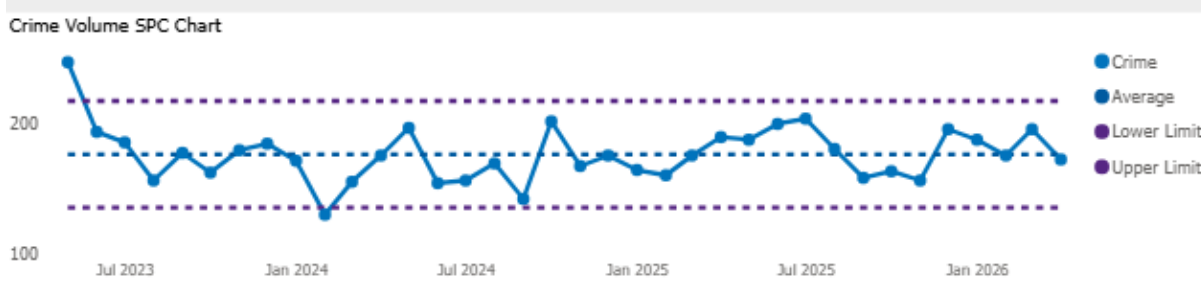
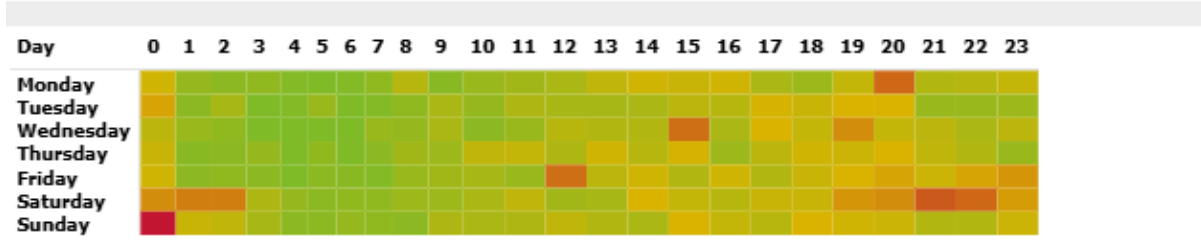
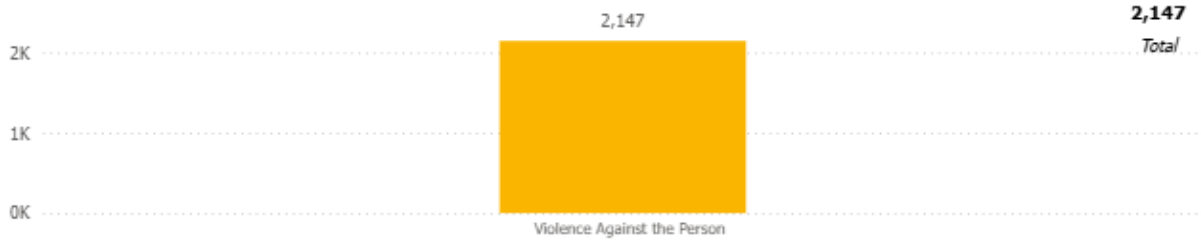


Figure 3 – Staffordshire Police Violence performance figures 2025/2026

Drugs

There have been a total of 293 recorded drug offences during 2025-2026. This is a 5% increase on the previous 12 months. This can be linked to greater proactivity relating to the Neighbourhood Policing Guarantee which has seen more hotspot patrols undertaken in high profile locations including Newcastle Town Centre, and the new proactive teams identifying, locating and prosecuting offenders.

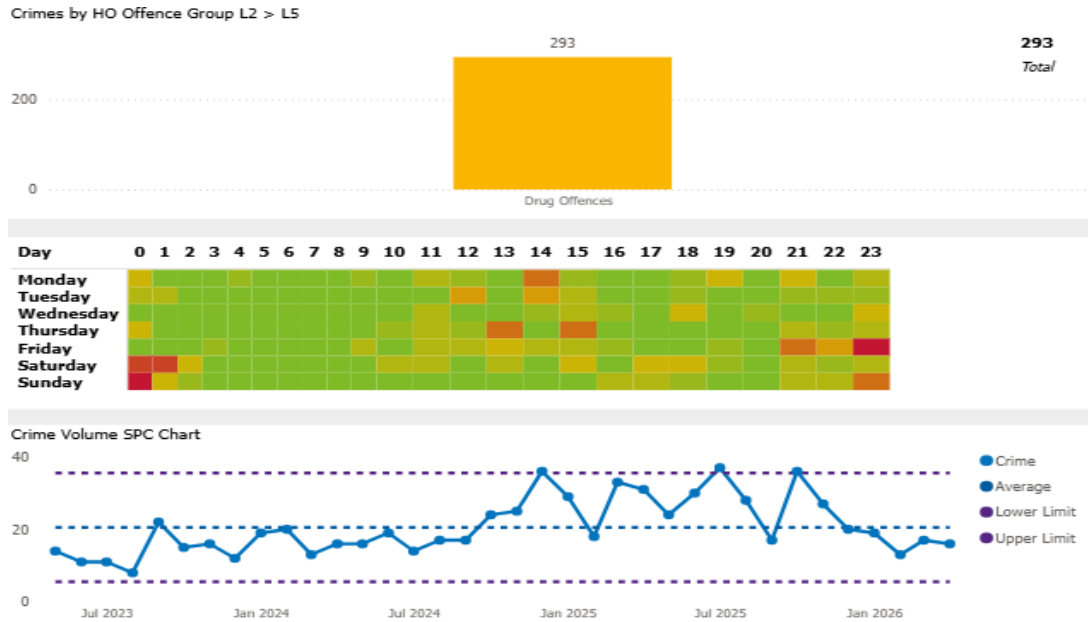


Figure 4 – Staffordshire Police Drug performance data 2025-2026.

Domestic Abuse

There has been a 13% increase in domestic abuse incidents during 2025-2026. It is unclear why demand has been generally higher this year in comparison to previous years but we have seen an increased focus on violence against women and girls and an increase promotion for the Domestic Violence Disclosure scheme.

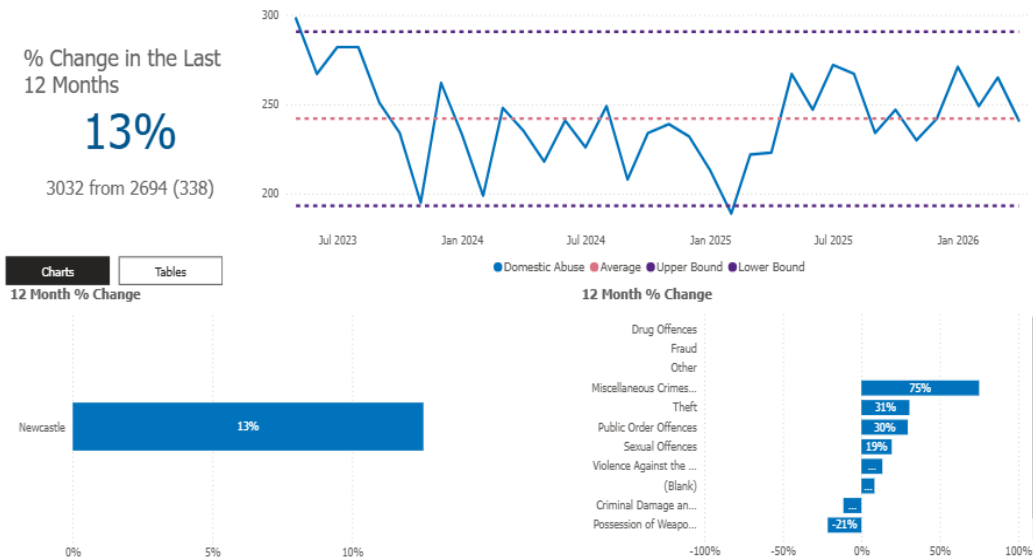


Figure 5 - Staffordshire Police performance data for Domestic Abuse for 2025-2026.

Stalking and Harassment

Incidents in relation to this area have seen an increase of 27% from the previous year with a total of 1,771 incidents recorded for 2025-2026. There has recently been a change in crime classification which has caused an increase in stalking

and harassment incidents. This means that repeat victims of domestic abuse or anti-social behaviour could be classified under stalking and harassment. This increase is also linked to the increase of domestic incidents some of which will include issues of unwanted contact and breach of bail incidents.

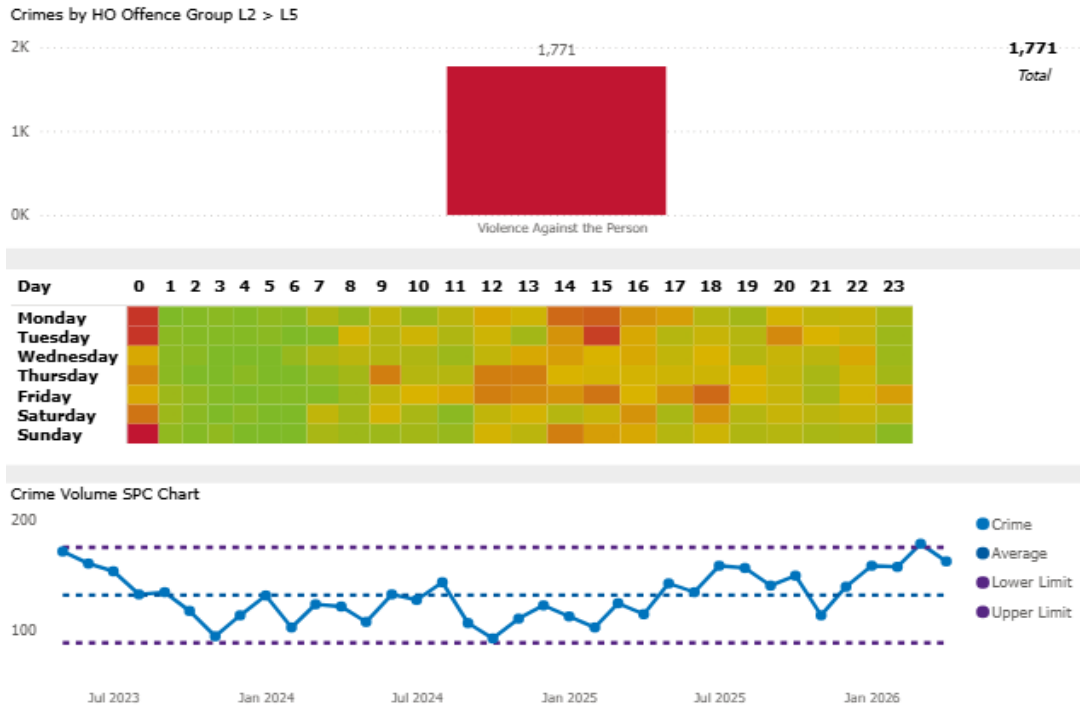


Figure 6 – Staffordshire Police Stalking and Harassment performance data 2025-2026.

- 2.5 Newcastle Local Policing Team (LPT) have seen a 20% increase in calls during the past 12 months which is believed to be directly attributable to the increase in these priority areas.

In relation to the work of the Community Safety Partnership, there have been a total of 49 Community Protection Warnings and 22 Community Protection Notices served over the past 12 months. These interventions are designed to target particular individuals who have been engaging in ASB and have proved to be a successful tool in this regard.

Current Activities/Operations

- 2.6 There are a number of activities and operations in progress to address issues in Newcastle-under-Lyme:
 - **Public Space Protection Order (PSPO)** – The town centre PSPO was renewed in May 2026. This order defines a suite of prohibitions in order to address problematic behaviour in and around the town centre. Non-compliance with the PSPO results in a Fixed Penalty Notice (FPN) of £100.

All Neighbourhood Policing Teams in Newcastle are able to enforce this and the Neighbourhood Delivery team also have the power to take enforcement action. A joint approach has been agreed whereby the police and the Neighbourhood Delivery team work together to regularly enforce the PSPO. There is also a PSPO in place for car cruising (enacted in 2025) which specifically targets and addresses issues in relation to car cruising related anti-social behaviour including playing loud music and racing. It should also be noted that there is a PSPO dedicated for Parks and Open Spaces (enacted in 2023 and due to be renewed in 2026) which specifies activity in relation to dog controls and the prohibition of alcohol.

- **Safer Nights** – this is a police led operation in relation to the Night Time Economy (NTE). This runs on Friday and Saturday evenings. Briefing commences at 22.00 and the team are out on the ground at 22.30 – 03.00. This includes 1 Police Sergeant and 9 Police Officers. Activities involved include: high visual profile and engagement, walk through venue checks and toilet checks, licencing checks, CCTV, Door Staff details, occasional drug swipe tests, taxi checks, PSPO and ASB enforcement where required.
- **Safer Newcastle** – this is a new branded Community Safety Partnership initiative to pull together all of the strands of the Community Safety Partnership and promote Newcastle as a safe place to live, work and visit. A formal launch of ‘Safer Newcastle’ took place in Newcastle Town Centre on the 22nd May.
- **Walksafe App** – this app was launched as part of Safer Newcastle and identifies safe spaces in the Borough where people can go for refuge and support if they are feeling vulnerable or afraid when out. It is free to download onto smartphones.
- **Night Time Economy project** - Staffordshire County Council are developing a Night Time Economy (NTE) Strategy for Staffordshire. As part of this Strategy, in March 2026, Newcastle was audited by an independent night time economy specialist (commissioned by Staffordshire County Council) and a range of recommendations were provided as part of the audit response. To help to implement the Strategy, Staffordshire County Council will fund pilot projects in selected towns which will then help to inform the development of the Strategy. Newcastle has submitted an application to be a pilot town and a decision is expected in late May 2026. The project will implement a range of economy, place based activities to help to support the night time economy based on the recommendations of the audit report. As such, Newcastle has applied for an award of £495,000 and if successful, the Borough Council will work with partners to implement the project for a 12 month period from September 2026 to August 2027.
- **Town Centre Policing strategy** – the neighbourhood team consists of 1 x Sergeant, 3 x Police Officers and 3 x PCSO.
The Proactive team also consists of 1 x Sergeant and 4 x Police Officers. This team will focus on the Precision Policing Areas which consists of Newcastle Town Centre but will include covert patrols.

- **Safe Space** – Launched in March 2022 and funded through the PFCC the Safe Space was opened on the Ironmarket to provide help and support to women and girls during the night time economy. The space is open from 9pm-2am on Fridays and is staffed by volunteers. The volunteers are also going to be trained in undertaking spiking testing samples, following a number of reported alleged spiking incidents during 2025/2026. Due to none of the reported incidents providing any conclusive evidence, the introduction of the spiking test kits will allow volunteers and other trained staff to test whether an individual has been spiked. If positive, this will then be submitted as evidence to the police.
- **Street Medics** – the project deploys street medics in the town centre from 9pm- 2am on key Friday and Saturday nights throughout the year. The medics act as a triage to assess and support people during the night time economy, and reduce the demand on Accident & Emergency services at the hospital.
- **CCTV** – the Council has a comprehensive CCTV system covering Newcastle town centre, including the subway routes around the ring road. CCTV is monitored 24/7 at the monitoring station in Stoke, and identified serious incidents are reported immediately to the police for response where appropriate.

Additional CCTV cameras are in the progress of being installed on privately owned buildings around the town and wayleave agreements have been finalised to facilitate this at Vue Cinema and Dunkirk.

- **Precision Policing** – this is an analytical report created to understand Staffordshire Police hotspots for vulnerability and crime. This aims to ensure that there is a more long term and partnership focused approach to resolving issues. The purpose of this model is to look at the wider social and economic issues and not just crime. This ensures that all partners understand the specific threats to the community in hotspot areas so all agencies are tailoring efforts in the same way. Newcastle Town Centre was selected for issues such as ASB, Serious Acquisitive Crime, Violence & Weapons and Drugs. This is why a number of tailored activity and supporting meeting structures are in place to ensure that this is coordinated between partners.
- **Joint Operations Group (JOG)**
Bi-monthly partnership meeting, chaired by the Portfolio Holder for Resident Services and Neighbourhoods, to review intelligence and target multi-agency interventions, and to allocate funding to projects which tackle ASB in communities.
- **Partnership Drop In** – this is held in the Safe Space on the third Thursday of each month. Hosted by the Council and Staffordshire Police, it is a drop in for businesses and members of the public to discuss issues in and around the town centre.

- **Staffordshire Police Pop Up** – this is held on a Wednesday in the Guildhall. PCSOs will be at the location on a Wednesday morning to help to deal with any enquiries.
- **Weekly Enforcement Meeting** – partnership meeting with the police and the Council to discuss key individuals causing problems in the town centre and agree a joint approach to appropriate interventions.
- **Problem Solving Meeting** – Bi weekly partnership problem solving meeting to address high demand issues across the Borough. The meeting looks for partnership solutions to reduce the demand on services and resolve the matter.
- **Injunctions** – This method is used to tackle persistent individual offenders in Newcastle-under-Lyme. An injunction obtained by the Council has recently been successfully obtained against an individual who has been causing problems, which has in effect banned them from the town centre for 2 years.
- **Civic Pride in Newcastle and Kidsgrove** – joint initiative between the Police, Borough Council, Aspire, Staffordshire Fire and Rescue Service, Staffordshire County Council and other partners to provide visible presence in communities and reassure/assist residents/businesses. Planned for 13th July 2026 in Kidsgrove and 17th – 21st August 2026 in Newcastle.
- **Newcastle Community Safety Day** – to be held on the 25th July 2026 in Queen’s Gardens and Astley Room – partners will come together to help promote the work of the Community Safety Partnership.
- **Joint Operations with Trading Standards and Immigration** – The CSP liaise with Trading Standards and Immigration and is planning another joint operation in 2026 to emulate the success of the previous operation where quantities of illicit goods were seized.
- **Newcastle Partnership Board**
Meets on a quarterly basis, provides the governance structure for community safety in the Borough, and reports to the County-wide Safer and Stronger Communities Strategy Group, hosted by Staffordshire County Council.
- **Newcastle Vulnerability Hub**
Meets twice a week. Chaired by the Borough Council, with a wide range of partners linked in. Aims to reduce the vulnerabilities of those referred in and reduce risk. Referrals can include, domestic abuse, substance misuse, mental health, financial issues and exploitation. The hub problem solves the cases where engagement is poor but risk is high.

Community Safety Priorities for 2026-2027

2.7 The Newcastle-under-Lyme Strategic Assessment (March 2026) was commissioned by the Office of Police, Fire and Crime Commissioner and undertaken by the Centre for Public Innovation. The identified priorities are:

- Violence Against the Person
- Theft Offences
- Stalking and Harassment
- Violence without Injury
- Violence with Injury
- Anti-social Behaviour

Additional CSP priorities for Newcastle as identified by local stakeholders include:

- Business Crime
- Shoplifting
- Domestic Abuse
- Drugs (and County Lines)

2.8 The Newcastle Local Police and Crime Plan 2024-2027 sets out the Community Safety Partnership's response to the priorities and how these will be tackled. A copy of this can be found in Appendix 1. The Newcastle Community Safety Partnership Action Plan 2026-2027 sets out the controls and measures in which the partnership will address the priorities highlighted in the strategic assessment.

3. **Recommendations**

That Cabinet:

- 3.1 Receives the report and notes the outcomes for 2025-2026 and the work of the Community Safety Partnership in continuing to tackle crime and anti-social behaviour, as well as the work in progress to continue to tackle identified priority issues.
- 3.2 Authorises the Service Director - Neighbourhood Delivery to formally accept project funding for the Night Time Economy Pilot Town status, in consultation with the Portfolio Holder for Residents Services and Neighbourhoods, if the bid is successful, and to implement the project.

4. **Reasons**

- 4.1 To provide an update to Informal Cabinet on the work of the Newcastle Community Safety Partnership for 2025-2026 and to outline the action plan for 2026-2027.

5. **Options Considered**

5.1 The Community Safety Partnership structure enables a range of options to be considered to address specific issues, and appropriate interventions agreed between partners.

6. Legal and Statutory Implications

6.1 The Council, the Police and other agencies in the Community Safety Partnership have a duty under Section 17 of the Crime and Disorder Act 1998 (as amended by the Police and Justice Act 2006) to consider crime and disorder in the delivery of its duties. The Community Safety Partnership also has a range of powers and duties available to enable appropriate interventions and enforcement action.

7. Equality Impact Assessment

7.1 An Equality Impact Assessment has been updated in relation to enforcement activities undertaken by the Council.

8. Financial and Resource Implications

8.1 There are no additional financial or resource implications directly relating to this report.

9. Major Risks & Mitigation

9.1 Without the Community Safety Partnership, there would be limited resource and capacity to deal with crime and ASB.

9.2 There would therefore be a risk of an increase in crime and ASB across the Borough, and in the town centre in particular.

9.3 Lack of funding could result in no delivery of some community safety projects that assist with reducing vulnerability and early intervention projects for low level ASB. The Community Safety Partnership pools resources and enables targeted funding bids to be made for identified priority projects.

10. UN Sustainable Development Goals (UNSDG)

10.1 The proposal contributes towards the following UNSDGs:



10.2 This project contributes to the UN Sustainable Development Goals above as follows:

- Good health and well being – this projects will help to support the well being of residents at this location who have suffered from anti-social behaviour and crime

- Peace, justice and strong institutions – it will help to bring those who cause ASB to justice by assisting the Police and preventing these locations from experiencing Crime and ASB.

11. **One Council**

Please confirm that consideration has been given to the following programmes of work:

One Commercial Council

We will make investment to diversify our income and think entrepreneurially.

One Digital Council

We will develop and implement a digital approach which makes it easy for all residents and businesses to engage with the Council, with our customers at the heart of every interaction.

One Sustainable Council

We will deliver on our commitments and make all decisions with sustainability as a driving principle.

12. **Key Decision Information**

12.1 This is not a key decision.

13. **Earlier Cabinet/Committee Resolutions**

13.1 None.

14. **List of Appendices**

14.1 Appendix 1: Local Police and Crime Plan 2024 – 2027

15. **Background Papers**

15.1 None